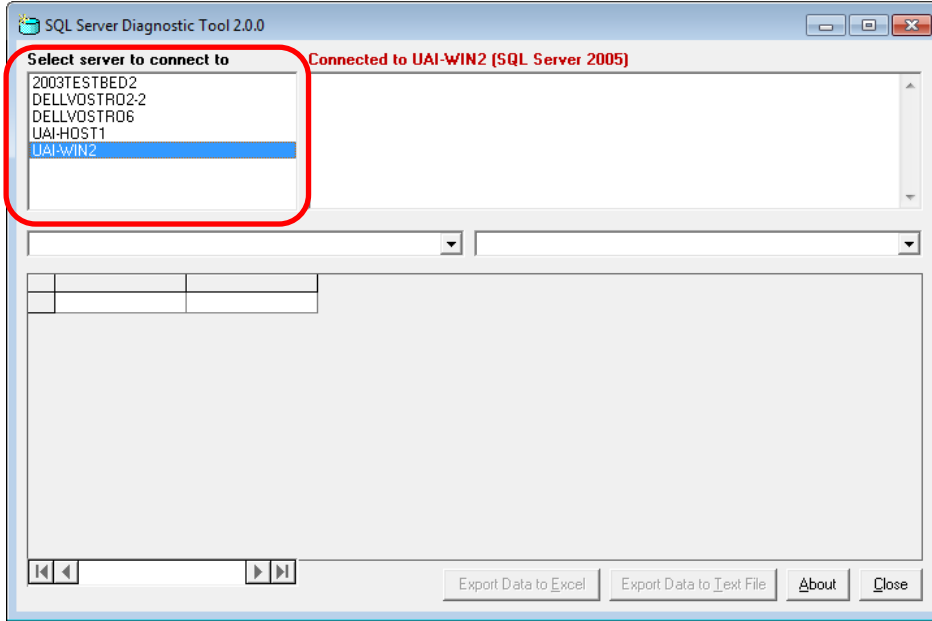


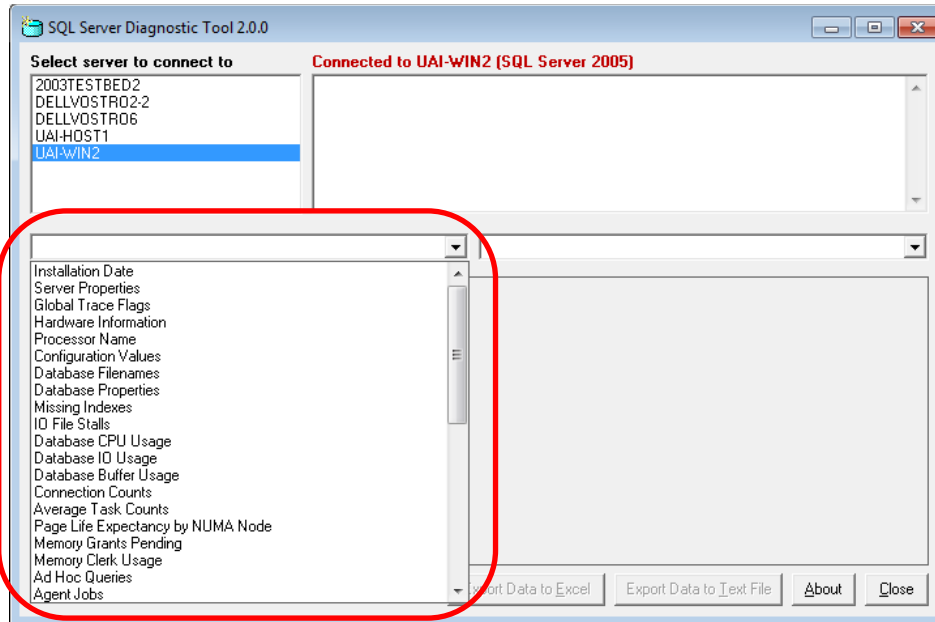
SQL Server Diagnostic Tool by SkySof Software Inc. (<http://www.skysof.com>)

Download <http://www.getfilez.com/sqldiag.exe>

Select an SQL Server to connect too.



Select a query to execute.



## Review query results

The screenshot shows the SQL Server Diagnostic Tool 2.0.0 interface. The 'Select server to connect to' list includes 2003TESTBED2, DELLVDSTRO2-2, DELLVDSTRO6, UAI-HOST1, and UAI-WIN2. The tool is connected to UAI-WIN2 (SQL Server 2005). The 'Configuration Values' section is highlighted with a red box and contains the following table:

name	value	value in use	description
Ad Hoc Distributed Que	1	1	Enable or disable Ad Hoc
affinity I/O mask	0	0	affinity I/O mask
affinity mask	0	0	affinity mask
Agent XPs	1	1	Enable or disable Agent
allow updates	0	0	Allow updates to system
awe enabled	0	0	AWE enabled in the ser
blocked process thresh	0	0	Blocked process reporti
c2 audit mode	0	0	c2 audit mode
clr enabled	0	0	CLR user code executio
cost threshold for paralle	5	5	cost threshold for paralle
cross db ownership cha	0	0	Allow cross db ownershi
cursor threshold	-1	-1	cursor threshold
Database Mail XPs	0	0	Enable or disable Datab

Select a database query and database.

The screenshot shows the SQL Server Diagnostic Tool 2.0.0 interface. The 'Select server to connect to' list includes 2003TESTBED2, DELLVDSTRO2-2, DELLVDSTRO6, UAI-HOST1, and UAI-WIN2. The tool is connected to UAI-WIN2 (SQL Server 2005). The 'Missing Indexes (Database)' section is highlighted with a red box and contains the following table:

index advantage	last user seek	Database.Schema.Table	equality columns	inequality columns	include
128.32	11/22/2013 3:57:34 PM	[GoldMine].[dbo].[CONTSUPP [RECTYPE], [U_CONTA			
72.52	11/22/2013 3:57:34 PM	[GoldMine].[dbo].[CONTSUPP [RECTYPE], [U_CONTA		[ZIP]	
13.9	11/22/2013 12:06:44 PM	[GoldMine].[dbo].[CONTHIST]	[ACCOUNTNO]		
6.06	11/22/2013 3:27:25 PM	[GoldMine].[dbo].[CONTSUPP [RECTYPE], [CONTACT			
4.88	11/22/2013 3:27:25 PM	[GoldMine].[dbo].[CONTSUPP [RECTYPE], [EXT]			[ACCOU
2.93	11/22/2013 3:26:05 PM	[GoldMine].[dbo].[CONTACT1]		[U_COMPANY]	[ACCOU
2.63	11/22/2013 3:36:56 PM	[GoldMine].[dbo].[CONTACT1]		[U_LASTNAME]	[ACCOU
2.17	11/22/2013 10:13:12 AM	[GoldMine].[dbo].[MAILBOX]	[USERID], [FOLDER]		[FLAGS]
1.78	11/22/2013 3:40:04 PM	[GoldMine].[dbo].[CONTACT1]	[KEY5]		[ACCOU
1.32	11/21/2013 1:32:36 PM	[GoldMine].[dbo].[CONTSUPP [RECTYPE], [CONTSUP			
0.36	11/21/2013 10:51:08 AM	[GoldMine].[dbo].[CONTACT1]	[KEY5]		[ACCOU
0.19	11/22/2013 8:42:46 AM	[GoldMine].[dbo].[CONTHIST]	[USERID], [ONDATE]		

Problems in SQL Server can be diagnosed and resolved using the many useful queries available in this tool. Several SQL Server DBAs spent well over one hundred hours building the queries used by this amazing tool.